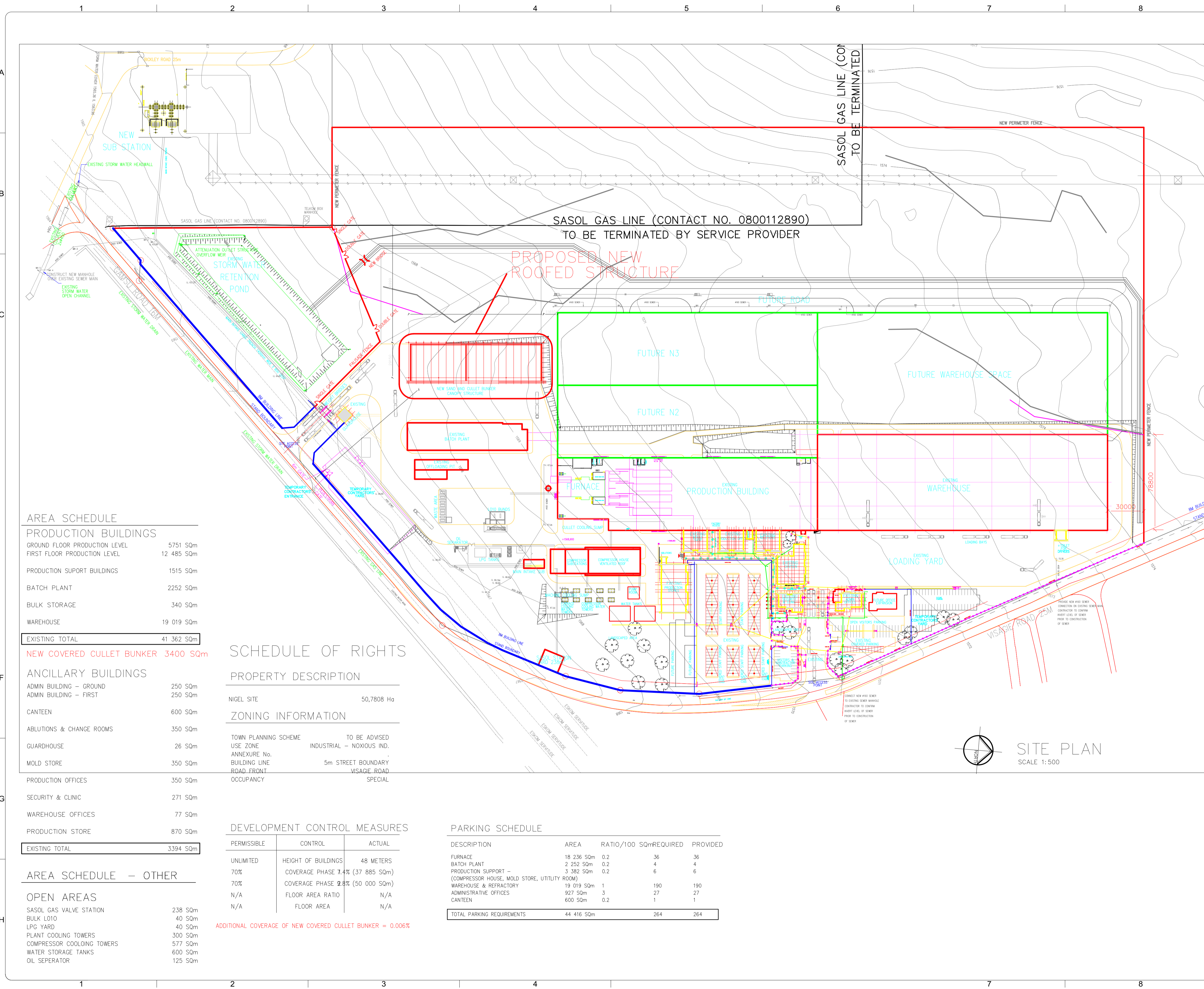


NOTES:

\*XXXXXXXXXXXXXXXXX  
\*XXXXXXXXXXXXXXXXX

SITE PLAN



AREA SCHEDULE

PRODUCTION BUILDINGS	
GROUND FLOOR PRODUCTION LEVEL	5751 SQm
FIRST FLOOR PRODUCTION LEVEL	12 485 SQm
PRODUCTION SUPPORT BUILDINGS	
BATCH PLANT	2252 SQm
BULK STORAGE	340 SQm
WAREHOUSE	19 019 SQm
<b>EXISTING TOTAL</b>	<b>41 362 SQm</b>

NEW COVERED CULLET BUNKER 3400 SQm

ANCILLARY BUILDINGS

ADMIN BUILDING - GROUND	250 SQm
ADMIN BUILDING - FIRST	250 SQm
CANTEEN	600 SQm
ABLUTIONS & CHANGE ROOMS	350 SQm
GUARDHOUSE	26 SQm
MOLD STORE	350 SQm
PRODUCTION OFFICES	350 SQm
SECURITY & CLINIC	271 SQm
WAREHOUSE OFFICES	77 SQm
PRODUCTION STORE	870 SQm
<b>EXISTING TOTAL</b>	<b>3394 SQm</b>

AREA SCHEDULE - OTHER

OPEN AREAS	
SASOL GAS VALVE STATION	238 SQm
BULK LOT10	40 SQm
LPG YARD	40 SQm
PLANT COOLING TOWERS	300 SQm
COMPRESSOR COOLING TOWERS	577 SQm
WATER STORAGE TANKS	600 SQm
OIL SEPERATOR	125 SQm

SCHEDULE OF RIGHTS

PROPERTY DESCRIPTION

NIGEL SITE 50,7808 Ho

ZONING INFORMATION

TOWN PLANNING SCHEME TO BE ADVISED  
USE ZONE INDUSTRIAL - NOXIOUS IND.  
ANNEXURE No.  
BUILDING LINE 5m STREET BOUNDARY  
ROAD FRONT VISAGIE ROAD  
OCCUPANCY SPECIAL

DEVELOPMENT CONTROL MEASURES

PERMISSIBLE	CONTROL	ACTUAL
UNLIMITED	HEIGHT OF BUILDINGS	48 METERS
70%	COVERAGE PHASE 1	7.4% (37 885 SQm)
70%	COVERAGE PHASE 2	9.8% (50 000 SQm)
N/A	FLOOR AREA RATIO	N/A
N/A	FLOOR AREA	N/A

ADDITIONAL COVERAGE OF NEW COVERED CULLET BUNKER = 0.006%

PARKING SCHEDULE

DESCRIPTION	AREA	RATIO/100 SQm	REQUIRED	PROVIDED
FURNACE	18 236 SQm	0.2	36	36
BATCH PLANT	2 252 SQm	0.2	4	4
PRODUCTION SUPPORT - (COMPRESSOR HOUSE, MOLD STORE, UTILITY ROOM)	3 382 SQm	0.2	6	6
WAREHOUSE & REFRACTORY	19 019 SQm	1	190	190
ADMINISTRATIVE OFFICES	927 SQm	3	27	27
CANTEEN	600 SQm	0.2	1	1
<b>TOTAL PARKING REQUIREMENTS</b>	<b>44 416 SQm</b>		<b>264</b>	<b>264</b>

SITE PLAN  
SCALE 1:500

REV	DESCRIPTION	DATE
A	FOR SUBMISSION	18/11/2016
Email: andrew@capex.co.za Call: 083 269 9661 Fax: (011) 388 3580		
Client Reference Number: C.099.D.6000.50.101		
Drawing Title: COUNCIL SUBMISSION - SITE PLAN -		
Title: PROPOSED CULLET BUNKER TO EXISTING FACILITY FOR CONSOL GLASS - NIGEL		
DATE	NOV 2016	REV A
FOR COUNCIL SUBMISSION		
SCALE	1:100	DATE NOV 2016 DRAWN BY J.S.C.

**Consol**

Head Office  
1 Okom road, Wadeville, South Africa  
P.O. Box 502  
Germiston  
1609

Production facilities  
Nigel factory: Visagie road, Pekaarsdorp, Nigel  
Wadeville factory: 1 Roscor road, Wadeville, Germiston  
Chaville factory: 11 Sake drive, Mandersburg  
Barkly factory: Lot 5 Sake Circle, Barkly, Capetown  
Pretoria factory: (Specialty Glass) 50 De la Rey road, Pretoria West

PROJECT: PROPOSED CULLET BUNKER CONSOL GLASS NIGEL N1

DRAWN: J.S.C. DATE: AUG 2016

SHEET: A1 TITLE: INFRASTRUCTURE ARCHITECTURAL OVERALL SITE PLAN

SCALE: 1:250

SHEET: 1 OF 1

REFERENCE DRG NO. . . . . REVISION . . . . .

CONSOL DRG. No. C.099.D.6000.50.101 REVISION A